

# Sanctuary

VENUE INFORMATION  
2025 - 2026



BLANCO  
HORNER



SANCTUARY  
ADELAIDE ZOO



# Welcome

*Thank you for considering Sanctuary.*

Sanctuary offers premium catering and event solutions across seven distinct locations within the picturesque Adelaide Zoo. Whether it's our contemporary flagship venue, the Sanctuary Adelaide Zoo Function Centre, our stunning lawns, or unique spaces nestled within the natural habitats of the zoo's animal enclosures, every event hosted by the Sanctuary team promises an extraordinary and unforgettable experience.

Owned and operated by the multi-award-winning Blanco Horner Hospitality Management, Sanctuary Catering and Events boasts over four decades of expertise. We pride ourselves on delivering the highest quality, ethically sustainable cuisine and exceptional service.

Through our premiere partnership with Adelaide Zoo, we offer opportunities to enhance your event with unique experiences. Imagine delighting your guests with giant panda sightings, tiger feeding sessions or intimate animal handling encounters, creating unforgettable memories.

The team at Sanctuary eagerly awaits collaborating with you to infuse a touch of magic into your next event, regardless of the occasion.





# Sanctuary

FUNCTION ROOMS

SANCTUARY CATERING & EVENTS



# Function Rooms



## *Attenborough Room*

**\$1200 ROOM HIRE**

ATTENBOROUGH ROOM (Sir David Attenborough)

Includes Durrell Gallery and Goodall Room.

A large space featuring floor to ceiling windows on the north and west aspects, with doors leading to the outside terrace and views across the Adelaide Zoo.

An operable wall provides the flexibility for a private room or a larger open space incorporating the Durrell Gallery. Dance floors can be located in the room, alternatively the Durrell Gallery can double as a dance floor.

The in-house sound system for speeches is throughout the room, ensuring your guests do not miss a word.

## *Goodall Room*

**\$600 ROOM HIRE**

GOODALL ROOM (Jane Goodall)

An intimate space perfect for meetings and a break-out space. The Goodall Room has a private terrace that has views across the Panda enclosure.

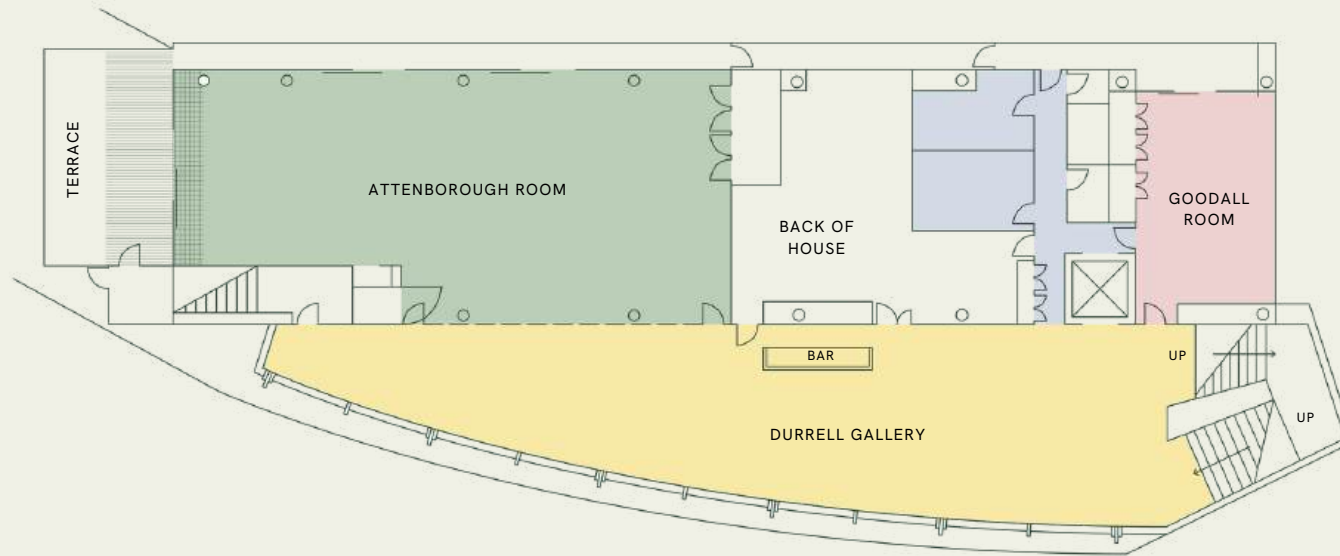
## *Durrell Gallery*

**\$800 ROOM HIRE**

DURRELL GALLERY (Gerald Durrell)

Boats a polished concrete floor, water feature, fairy light canopy and 45 meters of floor to ceiling windows overlooking Botanic Park. Ideal for cocktail parties, pre-dinner drink and conference meal breaks.

## First Floor



# Floor Plan

Seating capacities represents maximum numbers with allowance for a lecturn only.

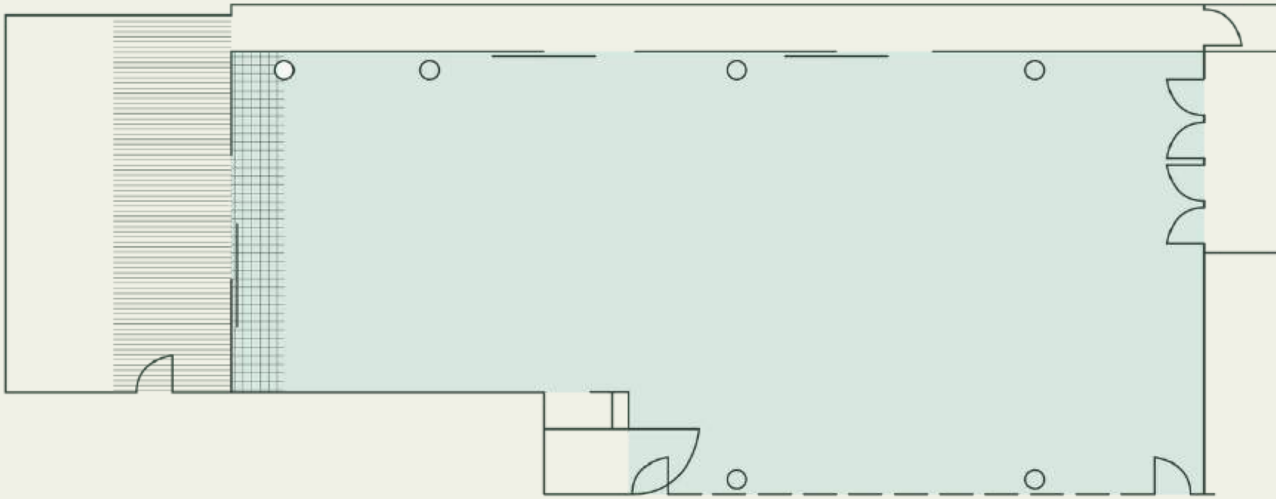
Set-up, display, staging, dance floor, entertainment & audio visual requirements will reduce capacities.

Subject to numbers and catering, room hire charges may be applicable.

Room diagrams are not to scale.

Scaled floorplans available upon request.

Room	Dimensions L X W (m)	Area (m <sup>2</sup> )	Ceiling Height (m)	Round Tables (10 Guests)	Long Tables (10 Guests)	Cocktail
Attenborough Room	27 x 9/11	286	3.8	240	260	280
Durrell Gallery	45 x 9/2	335	3 / 3.58	100	-	250
Goodall Room	10 x 6.6	66	3.8	40	40	60



# Attenborough Room

A large space featuring floor to ceiling windows on the north and west aspects, with doors leading to the outside terrace and views across the Adelaide Zoo. The in-house sound system for speeches is throughout the room, ensuring your guests do not miss a word.

Seating capacities represents maximum numbers with allowance for a lecturn only.

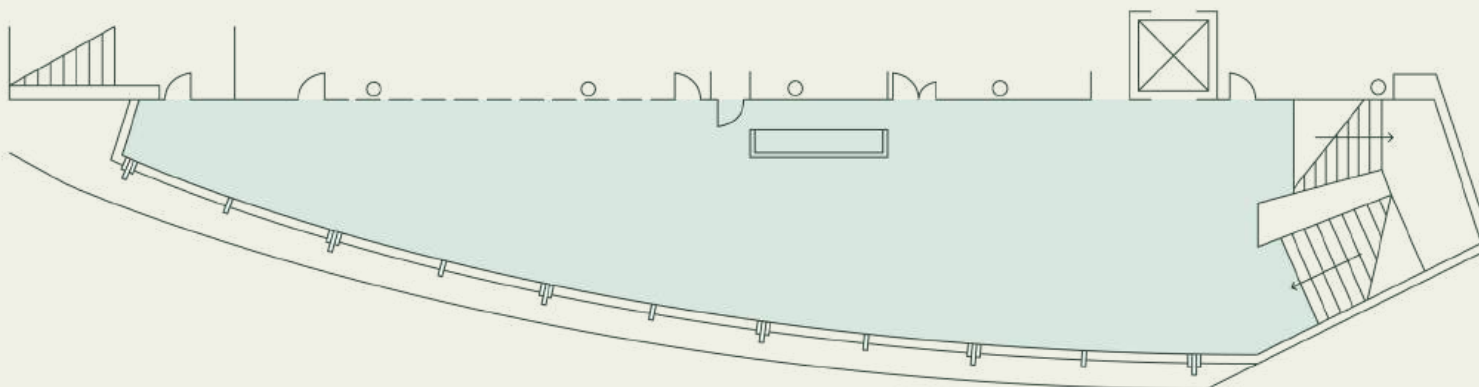
Set-up, display, staging, dance floor, entertainment & audio visual requirements will reduce capacities.

Subject to numbers and catering, room hire charges may be applicable.

Room diagrams are not to scale.

Scaled floorplans available upon request.

Dimensions L X W (m)	Area (m <sup>2</sup> )	Ceiling Height (m)	Round Tables (10 Guests)	Long Tables (10 Guests)	Cocktail
27 x 9/11	286	3.8	240	260	280



# Durrell Gallery

Inclusive in Above Room Hire With a full -length window taking in views across Botanic Park and a tranquil water feature. This space is perfect for pre-wedding drinks and canapés. Dance the night away on the Durrell Gallery's polished concrete floor.

Seating capacities represents maximum numbers with allowance for a lecturn only.

Set-up, display, staging, dance floor, entertainment & audio visual requirements will reduce capacities.

Subject to numbers and catering, room hire charges may be applicable.

Room diagrams are not to scale.

Scaled floorplans available upon request.

Dimensions L X W (m)	Area (m <sup>2</sup> )	Ceiling Height (m)	Round Tables (10 Guests)	Long Tables (10 Guests)	Cocktail
45 x 9/2	335	3/3.58	100	-	250

# Goodall Room

A quiet bridal retreat with a small private terrace overlooking the Giant Panda enclosure. You will be looked after by your own designated staff member throughout the evening.

Dimensions L X W (m)	Area (m <sup>2</sup> )	Ceiling Height (m)	Round Tables (10 Guests)	Long Tables (10 Guests)	Cocktail
10 x 6.6	66	3.8	40	40	60

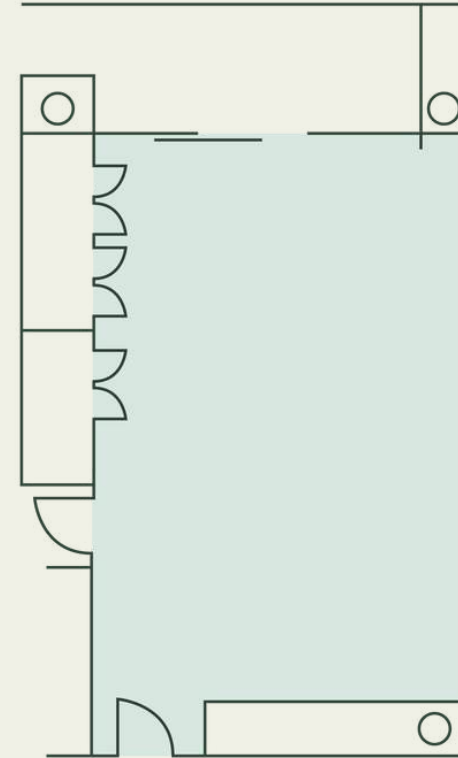
Seating capacities represents maximum numbers with allowance for a lecturn only.

Set-up, display, staging, dance floor, entertainment & audio visual requirements will reduce capacities.

Subject to numbers and catering, room hire charges may be applicable.

Room diagrams are not to scale.

Scaled floorplans available upon request.





# Adelaide Zoo Venues

## *Bamboo Forest*

HIRE COST FROM \$2000  
+SCE SET UP FEE FROM \$500

Bamboo Forest is the home of Wang Wang and Fu Ni –the only two giant pandas in the southern hemisphere. Perfect for cocktail functions and pre-dinner drinks for corporate events.

## *Immersion Longhouse*

HIRE COST \$1500\*  
+SCE SET UP FEE FROM \$500

Surrounded by greenery and constructed from natural materials, guests can immerse themselves in an Indonesian jungle setting. Glass fronted exhibits house the resident Sumatran tigers and orangutans, allowing your guests to get up close and personal with some of Adelaide Zoo’s favourite residents.

\* includes Tiger feed experience.

## *Sir Thomas E. Rotunda*

HIRE COST \$750\* & \$800\*\*  
+SCE SET UP FEE FROM \$500

Surrounded by greenery and constructed from natural materials, guests can immerse themselves in an Indonesian jungle setting. Glass fronted exhibits house the resident Sumatran tigers and orangutans, allowing your guests to get up close and personal with some of Adelaide Zoo’s favourite residents.

\* Monday to Friday Day

\*\* Friday Evening, Saturday & Sunday

Venue	Seated	Cocktail Undercover	Cocktail Total
Bamboo Forest	90	200	500
Immersion Longhouse	50	80	120
Sir Thomas Elder Rotunda	180 150 with dance floor	250	250

# Adelaide Zoo Venues

## *Central Lawns\**

HIRE COST FROM \$2000  
+SCE SET UP FEE FROM \$500

Let your guests enjoy the tranquility of a Summer's night at the Zoo. Ideal for welcome receptions, corporate Christmas parties and family friendly events.

**\*Includes the Sir Thomas Elder Rotunda.**

## *Plane Tree Centre*

HIRE COST \$500\* & \$650\*\*  
+SCE SET UP FEE FROM \$200

This versatile space can be used for conferences and exhibitions.

\* Half Day

\*\* Full Day

## *Nature's Playground*

HIRE COST FROM \$1000  
+SCE SET UP FEE FROM \$500

This fresh play space is a wonderful environment where visitors of all ages can let their imaginations run wild, have fun, challenge themselves and explore the natural world.

## *Giraffe Courtyard*

HIRE COST \$850\*  
+SCE SET UP FEE FROM \$500

Ideal location for pre dinner drinks or post conference networking.

**\*includes Giraffe feed experience.**

Venue	Seated	Cocktail Undercover	Cocktail Total
Central Lawns	750 Banquet	-	1100
Plane Tree Centre	50	-	100
Nature's Playground	100	200	400
Giraffe Courtyard	40	-	100





IMMERSION  
LONGHOUSE



CENTRAL LAWNS



SIR THOMAS  
ELDER ROTUNDA



BAMBOO FOREST



NATURE'S  
PLAYGROUND



PLANE TREE  
CENTRE



# Sanctuary

LOCATION

SANCTUARY CATERING & EVENTS





# Location

Sanctuary is located in the beautiful Adelaide parklands. With Botanic Park and the Adelaide Botanic Garden on our doorstep, you have a wonderful back drop for photography.

## DISTANCE

**Airport:** 20 min by car/taxi

**Bus Local:** 10 min walk

**Bus Interstate:** 10 min by car/taxi

**Train Station:** 15 min walk

**Tram:** 10 min walk

## INFORMATION

Sanctuary entrance via Plane Tree Drive

Plane Tree Drive is a one way public road

Deliveries Via loading zone off Plane Tree Drive by appointment

## PARKING

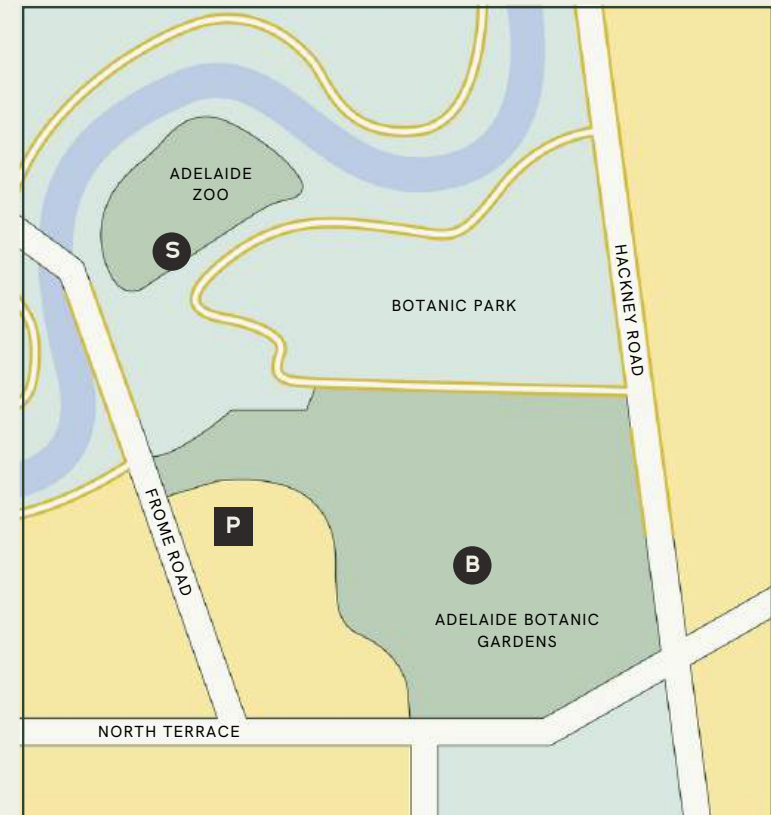
— Metered parking (subject to change)

**P** Multi level car parks

## BLANCO VENUES

**S** Sanctuary Adelaide Zoo

**B** Botanic Gardens Restaurant, Kiosk & Cafe



# Adelaide Zoo Map

SANCTUARY ADELAIDE ZOO FUNCTION CENTRE

G16

BAMBOO FOREST

I13

IMMERSION LONGHOUSE

O4

SIR THOMAS ELDER ROTUNDA

I9

CENTRAL LAWNS

J6

GIRAFFE COURTYARD

F7

PLANE TREE CENTRE

E17

NATURE'S PLAYGROUND

B12



SANCTUARY CATERING & EVENTS





*“The service at the Sanctuary was impeccable. Staff were absolutely lovely and incredibly polite.”*

**SUSAN**



*“Great venue with terrific atmosphere, view and convenient location.”*

**HUNTER**

# General Information

Sanctuary Catering & Events (SCE) is proudly managed by the award winning team from Blanco Horner Hospitality Management. If you require any further information, please do not hesitate to contact one of our friendly events team.



## SECURITY

Security may be required for your event. Guards are charged at \$60 per hour for a min of 4 hours. Total security cost is dependent on venue and event. Please consult our events team for more information.

## GETTING THERE

Located on Plane Tree Drive, Sanctuary Adelaide Zoo Function Centre (SAZ) is located on the first floor above the main entrance to Adelaide Zoo. Entry doors are to the right of the Zoo Shop on the front of the building. All other venue spaces are located with the Adelaide Zoo.

## DISTANCE

**Airport:** 20 min by car/taxi

**Bus Local:** 10 min walk

**Bus Interstate:** 10 min by car/taxi

**Train Station:** 15 min walk

**Tram:** 10 min walk

## PARKING

There is extensive parking on Plane Tree Drive and surrounding areas, at either multi-level facilities or on the street. Public parking is metered during the day and free in the evenings\*. SAZ does not have any dedicated parking facilities.

## DELIVERIES

Deliveries can be made via Gate 1 off Plane Tree Drive between 10am and 4pm, by prior arrangement. As SAZ has limited storage facilities it is best to discuss delivery times and storage facilities with your Event Coordinator

## ACCESS

Access to the first floor is via the main staircase. Wheelchair access is available via a service lift in the foyer.



# Audio visual, Lighting & Staging

Our digital projectors and screens, PA system and lectern and microphone are included in your venue hire. In-house equipment can be complimented by our AV partner, Space AV.

## *Audio Equipment*

---

Lapel radio mic	\$88
Handheld radio mic	\$88
Headset mic (requires lapel mic)	\$29

## *Vision Equipment*

---

42' Presenter Foldback Monitor	\$165
55" LCD screen with truss	\$275
65" LCD screen with truss	\$330
75" LCD screen with truss	\$375

## *Delivery & Labour Charges*

---

AV Operator per hour (min 3 hours)	\$66
Delivery/pickup fee	\$77
After hours bump out (after 5pm)	\$120

## *Conferences*

---

Logitech Presentation Clicker	\$25
Flipchart with pens and paper	\$44
6'x4' Whiteboard with pens	\$44
Black tub chair	\$44
Black and timber stool	\$29
Electronic Whiteboard	\$165
i5 Laptop - Windows 10	\$110

## *Staging & Event Additions*

---

Dance floor	\$25 PER SQUARE METRE
1m x 1.5m (camera riser)	\$44
2m x 2m	\$88
3m x 2m	\$132
4m x 2m	\$176
5m x 2m	\$120

## *Lightning*

---

Lectern light	\$44
LED uplights	\$25

# Contact

## *Sanctuary*

---

Jamie Ballentine - Venue & Events Manager

[sanctuary@blanchohorne.com.au](mailto:sanctuary@blanchohorne.com.au)

(08) 8230 1313

[www.blanchohorne.com.au/event-venues/sanctuary/](http://www.blanchohorne.com.au/event-venues/sanctuary/)

